

Do NOT scale the drawings.
Instead rely on the dimensions and their definitions.

MARCHAND	CLASS	TRACE
IM1	E-O	

SQ-MIM016940.1

Panasonic

Compact AC geared motor

Type :Electromagnetic Brake motor (Three phase)

UL, c-UL, CE, CCC approved

M8MX25GR4YG1 4P 25W 200/200/220/230V 50/60/60/60Hz

Time rating:S1(cont.) Thermal Class:130(B) IP44

Characteristics

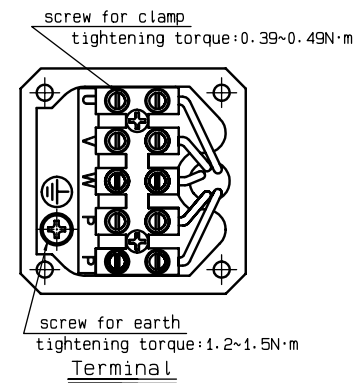
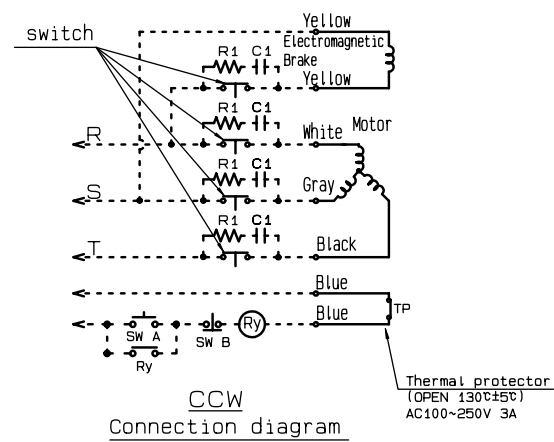
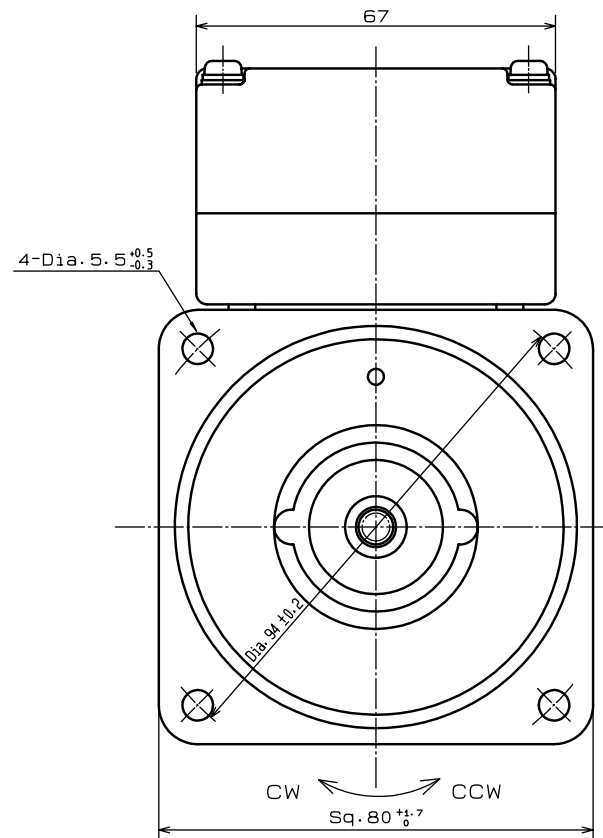
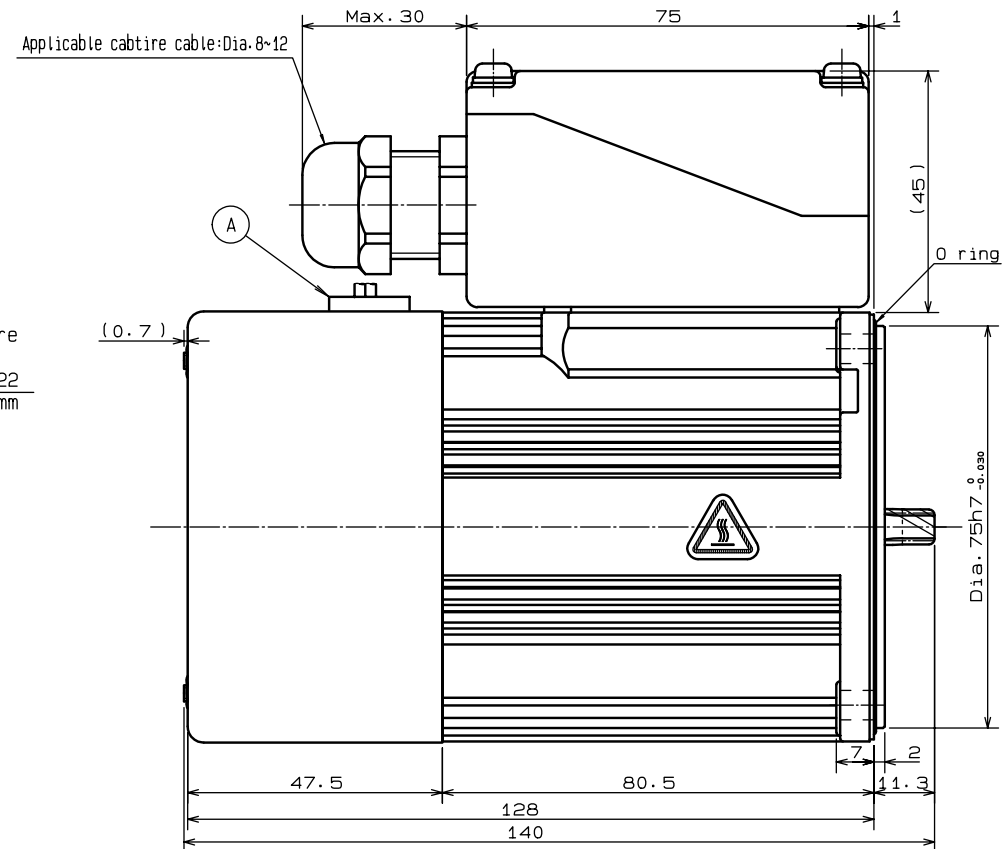
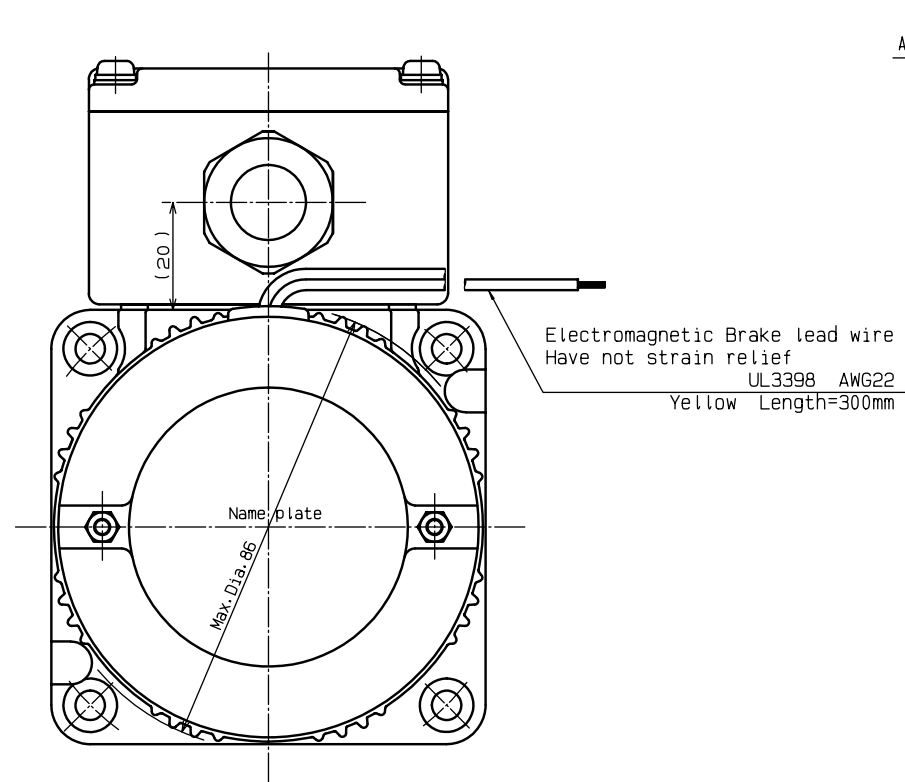
Voltage	Frequency	rated current	rated input	rated speed	rated torque	starting torque	starting current	Brake input	Brake current	Holding brake torque
200V	50Hz	0.25A	50W	1350min ⁻¹	0.18N·m	0.54N·m	0.62A	6W	0.03A	0.10N·m
200V	60Hz	0.22A	47W	1625min ⁻¹	0.15N·m	0.40N·m	0.58A	6W	0.03A	0.10N·m
220V	60Hz	0.23A	49W	1650min ⁻¹	0.14N·m	0.50N·m	0.64A	6W	0.03A	0.10N·m
230V	60Hz	0.24A	50W	1675min ⁻¹	0.14N·m	0.54N·m	0.65A	6W	0.03A	0.10N·m

General Dimension Tolerance (+)

Assembly					Angle		Dimension of A	
							(Shorter Side)	
Up to 6	Over 6 to 30	Over 30 to 120	Over 120 to 300	Over 300	Up to 10	Over 10 to 50	Over 50 to 100	Over 100
0.3	0.5	0.7	1.2	2.0	5°	3°	1.5°	45°

Reduced drawing

IP44:Applied when the direction of the lead wire hole ① is downwards



General specification

- Operational condition: ambient temperature -10℃~+40℃, the humidity: less than 85%RH.
- Shaft end edges assumes it less than 5/100(TIR).
- Please do not disassemble the motor. (It causes abnormal noise.)
- This motor has a thermal protector.
- Body color is dark brown.
- An electromagnetic brake operates by switching it off. It remove by switching on.
- A position of a switch please obey a connection diagram.
- Please use R1+C1 for protection between the point of contact of a switch. There is optional DV0P008. A commercial article: R1=10~200Ω·More than 1/4W. C1=0.1~0.33μF·More than 250V.
- As for the life of this motor, an electromagnetic brake is 1,000,000 times at permission inertia in 0.178kg·cm².
- Applicable gear head: MX8GDM (metal bearing) MX8GDB (ball bearing)
- Applicable decimal gear head: MX8G10XB.
- When put a gear head together, please confirm that an O ring attached to a motor. (If there is not an O ring, it cause an oil blur.)

Scale	MATSUSHITA ELECTRIC INDUSTRIAL CO., LTD.	Agreement	Model	M8MX25GR4YG1
1 : 1	3rd Angle System Unit: mm		Name	OUTLINE DRAWING
Designed	Drawn	Checked	No.	SQ-MIM016940.1
KITAMURA	KITAMURA	WADA		
2007/02/09	2007/02/09	2007/02/09		