

SQ-DIMA70601

Panasonic

Compact AC geared motor

Type : Gear head

Model : MZ9G3B~MZ9G200B

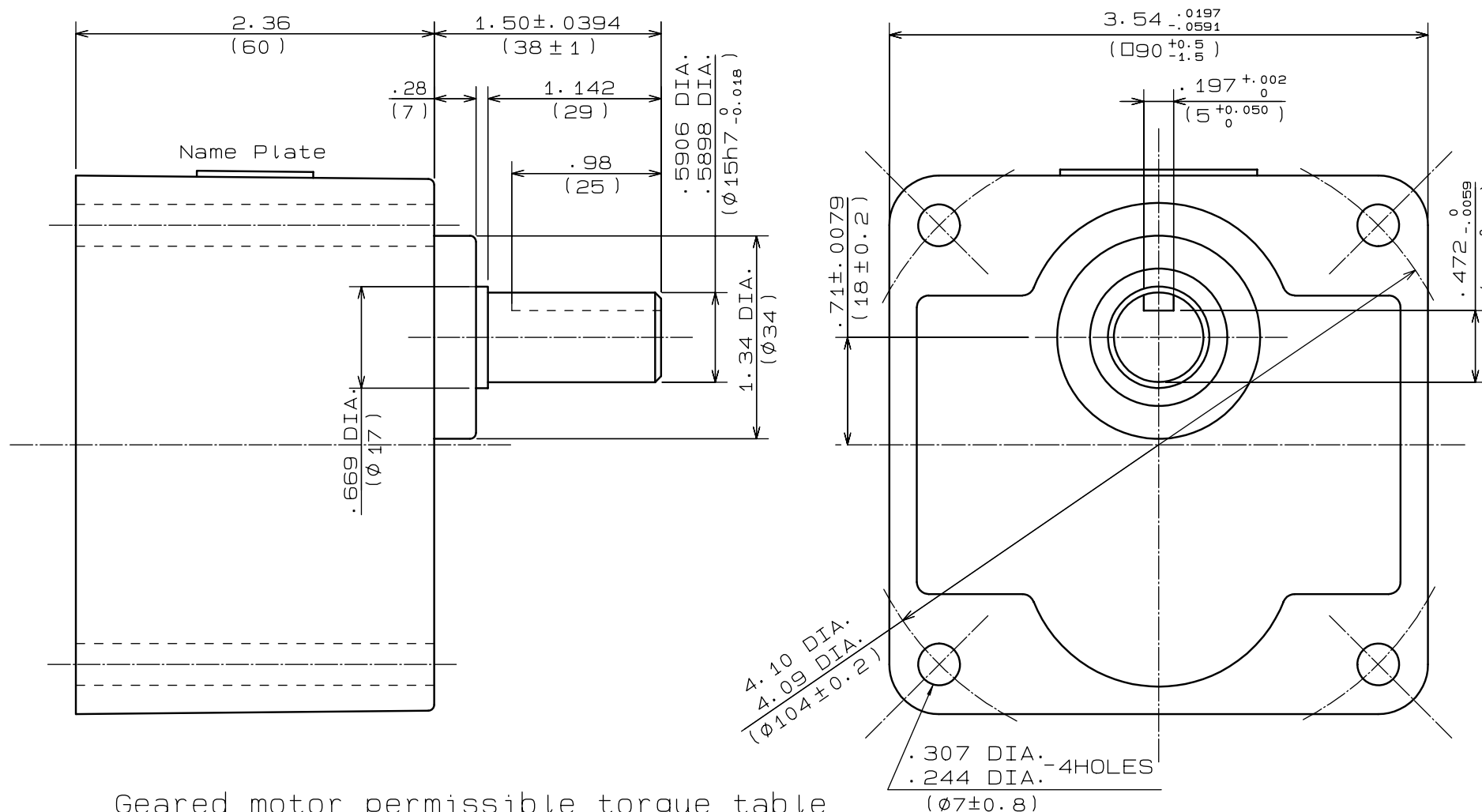
Bearing type : Ball bearing

General Dimension Tolerance (+)								
Assembly					Angle		Dimension of A	
Up to 6	Over 6 to 30	Over 30 to 120	Over 120 to 300	Over 300	Up to 10	Over 10 to 50	Over 50 to 100	Over 100
0.3	0.5	0.7	1.2	2.0	5°	3°	1.5°	45°

General Specification

- Ambient temperature: -10°C~+40°C
- Ambient humidity: Less than 85%RH
- Maximum overhung load: 132lb. (588N)
remarks: Point of 0.748in. (19mm) from the shaft-end.
- Maximum thrust load: 33lb. (147N)
- Color: standard color. (Dark brown)
- Do not tap the shaft at the gearhead when installing a pulley or a sprocket. Heavy tapping might cause unnecessary noise.
- Attach the pulley or sprocket to the bottom end of the output shaft.
- Since grease is enclosed in the gear box, pay extra caution for it's affect to other material such as plastic.
- Make sure the O-ring(for oil seal) is located in the right position on the bracket of the motor when assembling the motor and the gear head.
- Accessories

Hexagon socket head cap screws	M6 P1.0 length 3.35in. (85mm)	4 Pieces
Plain washers	for M6	4 Pieces
Nuts	M6 P1.0	4 Pieces
Key	as par drawing	1 Piece



Geared motor permissible torque table

Model	MZ9G 3B	MZ9G 3.6B	MZ9G 5B	MZ9G 6B	MZ9G 7.5B	MZ9G 9B	MZ9G 10B	MZ9G 12.5B	MZ9G 15B	MZ9G 18B	MZ9G 20B	MZ9G 25B	MZ9G 30B	MZ9G 36B	MZ9G 50B	MZ9G 60B	MZ9G 75B	MZ9G 90B	MZ9G 100B	MZ9G 120B	MZ9G 150B	MZ9G 180B	MZ9G 200B		
Nominal gear reduction ratio	3	3.6	5	6	7.5	9	10	12.5	15	18	20	25	30	36	50	60	75	90	100	120	150	180	200		
Actual gear reduction ratio	3.02	3.61	5.03	6.02	7.58	9.06	10.2	12.3	14.8	18.0	19.9	25.5	30.1	36.1	50.9	60.5	76.0	89.8	98.6	121.2	150.4	182.1	202.1		
Speed (min ⁻¹)	50Hz	500	416.7	300	250	200	166.7	150	100	83.3	75	60	50	41.7	30	25	20	16.7	15	12.5	10	8.3	7.5		
	60Hz	600	500	360	300	240	200	180	144	120	100	90	72	60	50	36	30	24	20	18	15	12	9		
Permissible torque	Motor Output 60W	50Hz	N-m	0.98	1.18	1.57	1.96	2.35	2.94	3.14	3.92	4.70	5.59	6.27	7.55	9.11	11.0	15.2	17.8						19.6
			lb-in	8.7	10.4	13.9	17.3	20.8	26.0	27.8	34.7	41.6	49.5	55.5	66.8	80.6	97.3	134.4	157.5						173.5
		60Hz	N-m	0.78	0.98	1.37	1.57	1.96	2.35	2.65	3.33	3.92	4.70	5.29	6.47	7.55	9.11	12.6	15.2						19.6
			lb-in	6.9	8.7	12.1	13.9	17.3	20.8	23.5	29.5	34.7	41.6	46.8	57.3	66.8	80.6	112.0	134.4						173.5
	Motor Output 90W	50Hz	N-m	1.37	1.67	2.25	2.74	3.43	4.12	4.51	5.68	6.76	8.04	9.02	10.9	13.0	15.7	19.6						19.6	
			lb-in	12.1	14.8	19.9	24.2	30.4	36.5	39.9	50.3	59.8	71.2	79.8	96.5	115.0	138.9	173.5						173.5	
		60Hz	N-m	1.18	1.37	1.86	2.25	2.84	3.43	3.72	4.70	5.68	6.76	7.55	9.21	10.9	13.0	18.3						19.6	
			lb-in	10.4	12.1	16.5	19.9	25.1	30.4	32.9	41.6	50.3	59.8	66.8	81.5	96.5	115.0	161.9						173.5	
Direction of rotation of Output shaft		The same direction as the shaft of the motor										The opposite direction as the shaft of the motor					The same direction as the shaft of the motor								

Note: Speed shown in the above table is based on synchronous speed of the motor. Actual output speed is 2~20% less than the above speed, depending on the load.

Scale	MATSUSHITA ELECTRIC INDUSTRIAL CO.,LTD.	Agreement
1 : 1	⊕ 3rd Angle System Unit: in/mm	
Designed	Drawn	Checked
OGAWA	OGAWA	YAMAGUCHI
14. May. 2001	14. May. 2001	14. May. 2001

Model	MZ9G3B~MZ9G200B
Name	OUTLINE DRAWING
No.	SQ-DIMA70601

TRACE
J
IM1